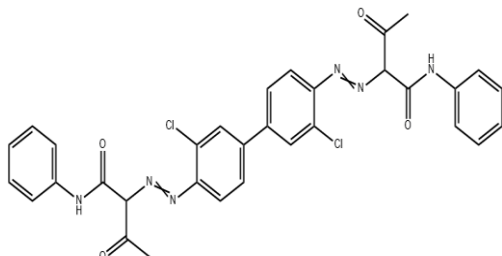


**Pigment Yellow 13 Technical Data Sheet**

**Chemical Structure :-**

**Mass tone: 5%**

**Tint Tone: 1:10**



**General Description:-**

**Physical Properties:-**

<b>Trade Name</b>	Pigment Yellow 13
<b>CAS NO</b>	5102-83-0
<b>Chemical Class</b>	Diarylide Yellow AAMX
<b>EU No.</b>	225-822-9
<b>Hue</b>	Greenish Yellow

<b>Appearance</b>	Reddish Yellow Powder
<b>Sieve Residue on 45 μ</b>	<1%
<b>Moisture Content</b>	Max.1%
<b>Electric Conductivity (us/cm)</b>	≤500
<b>PH Value</b>	7.0-8.0
<b>Bulk Density</b>	1.5 gm /cm <sup>3</sup>

**APPLICATION:-**

<b>PAINT</b>	Decorative Paints/Industrial Paints/Emulsion Paints
<b>INK</b>	Water based, Gravure based inks
<b>TEXTILES</b>	Textile Printing
<b>PLASTICS</b>	MASTER BATCH

**Fastness Properties:**

Light (Full)	Light (Reduced)	Heat: 240°C/ 20min	Water	5% HCL	5% NaOH	Butanol	Butyl Acetate	Xylene	MEK	Linseed Oil
6	5-6	Suitable	5	4-5	4-5	5	5	4-5	4	5

**PACKAGE:-** 25kg bag or drum with pallets.

**PIGMENT YELLOW 13**

**ASAHI TENNANTS COLOR PVT. LTD.**

**PAGE NO.**

**1**

**Regd. Office: Asahi Tennants Colors Limited.**  
Asahi House<sup>®</sup>13, Aaryans Corporate Park,  
Near shilaj Railway Crossing, Thaltej- Shilaj Road, Thaltej,  
Ahmedabad-380059,

**Tele : +91-9820472046**  
**E-mail : shailesh@atccolor.com**  
**E-mail :qc.azo@atccolor.com**